

MyLabOne[™]VET

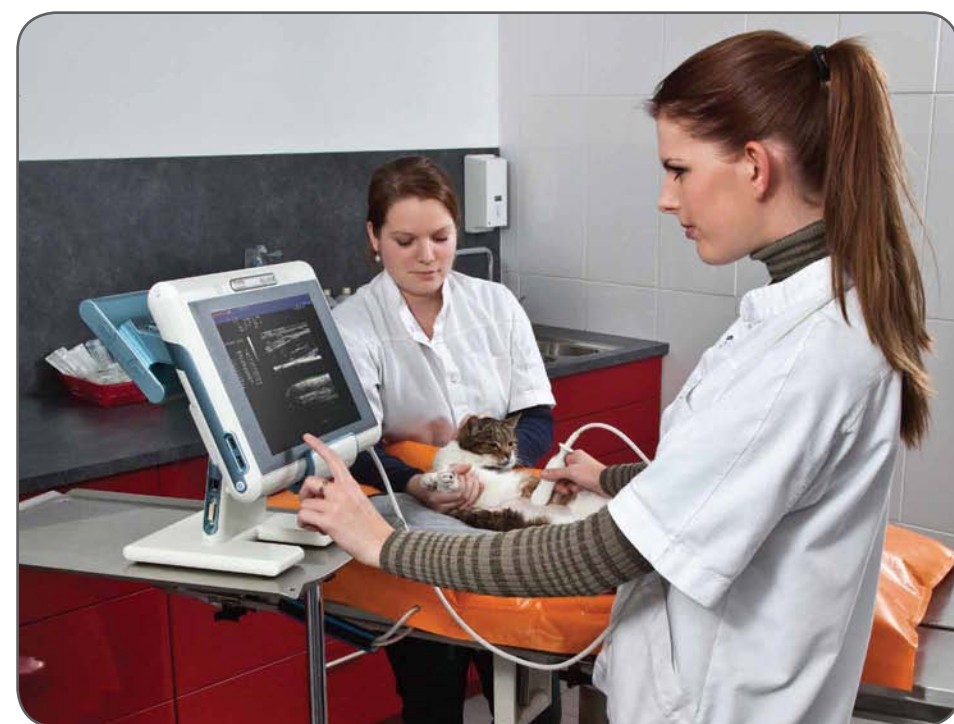
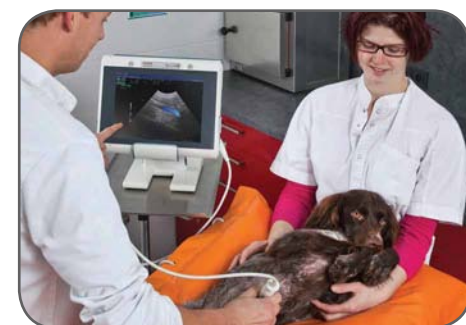
esaote
piemedical

MyLabOne[™]VET

Vet Ultrasound

Arm-held , the wearable ultrasound

MyLabOne[™]VET



Esaoe S.p.A.
International Activities: Via di Caciolle, 15 50127 Florence, Italy. Tel. +39 055 4229 1, Fax +39 055 4229 208, international.sales@esaote.com
Domestic Activities: Via A. Siffredi, 58 16153 Genoa, Italy. Tel. +39 010 6547 1, Fax +39 010 6547 275, info@esaote.com



www.esaote.com

Официален представител
на Esaoe SpA за България
sonomedica
София • Пловдив • Варна
Национален тел. 0700 16251
Моб. 0896 882958
e-mail: office@sonomedica.bg
www.sonomedica.bg

9715481B51EM02

Specifications subject to change without notice

sonomedica

esaote
piemedical

VET
ULTRASOUND



In touch with Veterinary

- > Quick and Precise Animals Care: Imaging, Diagnosing, Storing, Printing
- > Ease of Use
- > Dedicated Simplified Interface
- > Full touch screen control



MyLabOne VET

- > Enlarged Image Visualization
- > User-friendly Simplified Interface
- > Double level Touch Screen Interface
- > Customizable Clinical Protocols
- > Wireless networking for data storage and printing

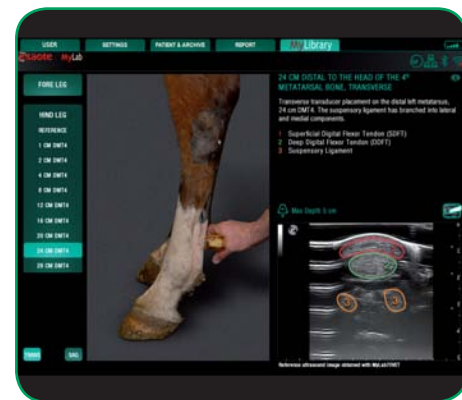
MyLabDesk

- > Image management made easy
- > Direct networking (Wireless, LAN)
- > Review, modify and examination print out (reports and images)
- > Data export and back-up: CD/DVD burning, e-mail, etc...

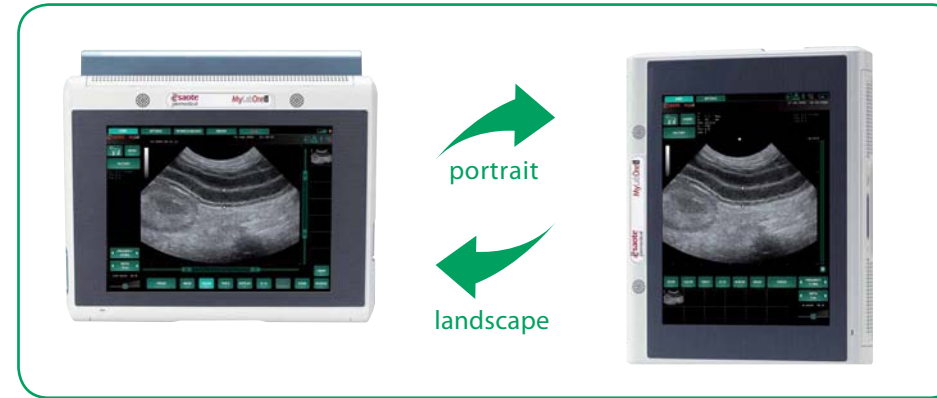


MyLibrary

- > e-book reference for selected applications



High-end Vet Ultrasound in One small package



- Easy cleaning
- Protection cover
- Auto-orientation
- Arm-held solution



Customizable buttons on the handle and probe



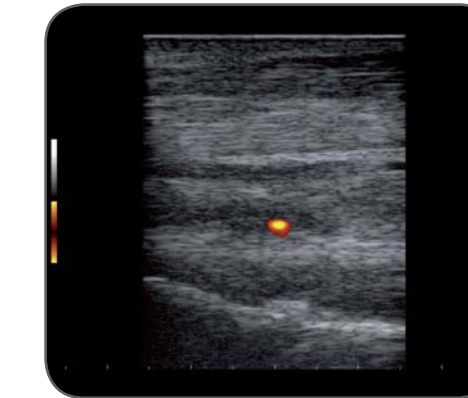
Linear endorectal

Micro Convex

Linear

Convex

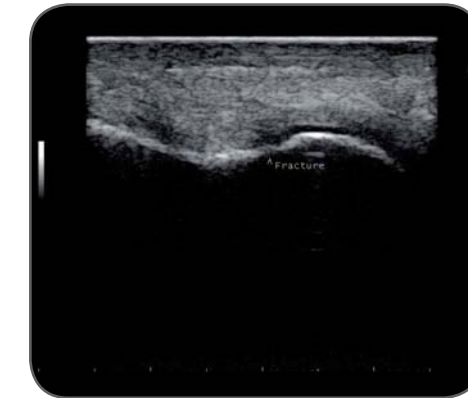
MyLabOne VET



Equine - old lesion vascularization in tendon



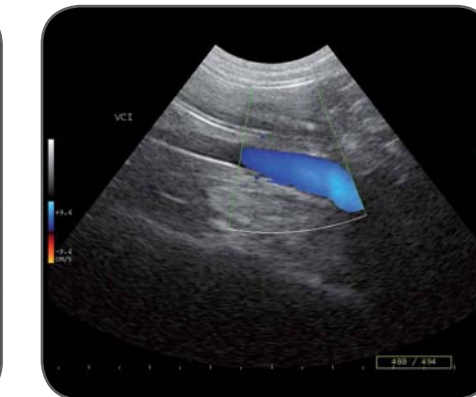
Equine - comparative study



Equine - bone fracture



Canine - intestinal tract



Canine - vena cava inferior



Feline - polypoid cystitis



Equine - corpus luteum



Equine - foal heart



Bovine - calf head