

A World without Boundaries

Gamma



with Smart Portable Ultrasound

Wherever, Whenever...

MyLab™Gamma sets ultrasound free bringing superb quality imaging and fast, accurate diagnosis to the point of care in any situation – wherever and whenever.



...select your
e-app and probes

Anaesthesia
Emergency & Critical Care
Cardiology
Vascular
Radiology
Musculoskeletal
Rheumatology
Women's Healthcare
Neurology



Point-of-Care

With MyLab™Gamma, ultrasound can be effortlessly brought to the Point-of-Care. High level automations and ergonomics improve workflow and reduce exam's time.



Anaesthesiology

Anaesthesia is a medical intervention for which ultrasound can be easily used. MyLab™Gamma perfectly suits this application, offering outstanding quality in superficial districts, thanks to 18 MHz imaging.



Emergency/Critical Care

MyLab™Gamma offers great advantages and clinical benefits for simple daily interventional procedures as well as for complex patient conditions. Emergency and critical care physicians will be able to deliver extremely high quality ultrasound scanning with this system.



Mobile Services

MyLab™Gamma is battery operated, which makes it an extremely mobile system that can be easily shared between different departments within a clinic or hospital.

It can also be brought on-site without any problem. Thanks to its quick boot-time and stand-by operating mode, the scanner is ready to use within seconds.



Cardiovascular imaging

MyLab™Gamma is equipped with comprehensive cardiac and vascular packages and provides excellent image quality in a very compact size. It is a complete system for cardiovascular scanning applications thanks to its advanced features, customizable measurements and reporting package.

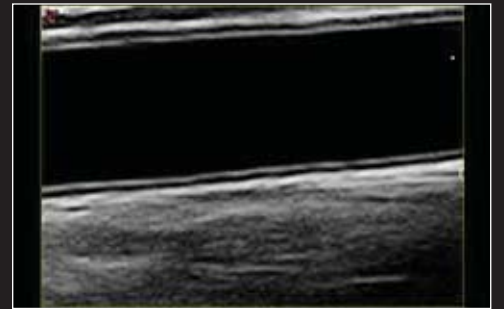
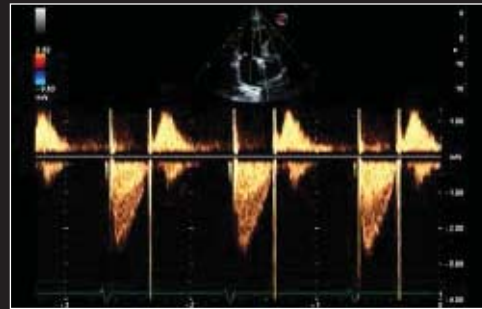
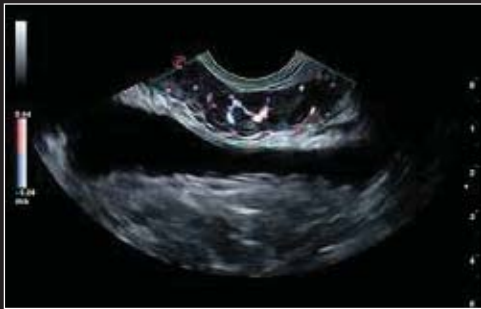
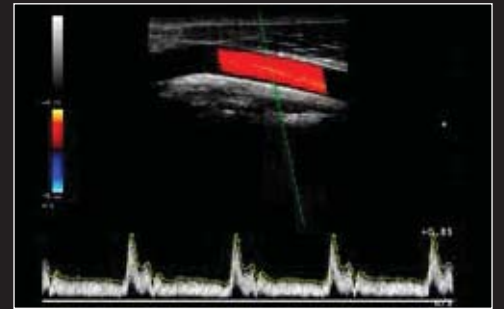
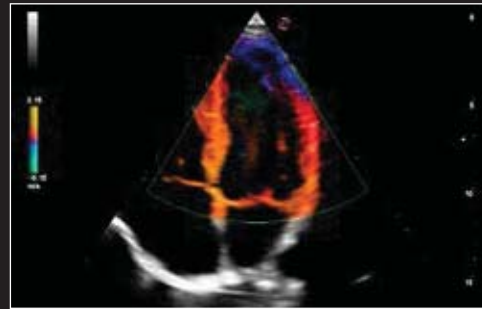
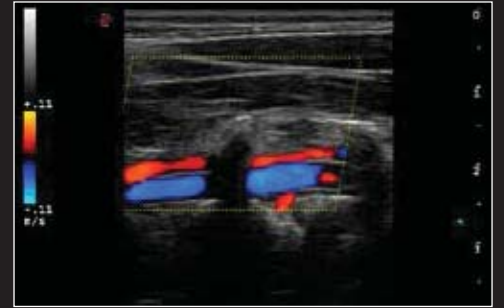


General Imaging/ Women's Health

The wide range of available transducers allows the user to choose the best probe for every radiology examination. The convex and endocavity probe provide excellent image quality within the women's health application, whereas the 3D probe can also be used during a standard examination.



From Point-of-Care to Shared Service solutions



XStrain™ 4D

By combining XStrain analysis of standard apical views (2Ch, 4Ch, Alax), XStrain 4D provides complete volumetric assessment of left ventricle. Global and regional curves as well as strain-strain rate and volume measurements are easily and quickly displayed*.



RFQIMT

RFQIMT (Quality Intima Media Thickness) is based on the innovative Esaote's RF-data technology. Accuracy, ease of use, real-time feedback, graphs and report are part of this innovative package for early diagnosis clinical practice.

*through MyLab™Desk³ software suite

Speed up your workflow

The innovative and modern user interface implementing the eTouch technology offers an extraordinary improvement for the ultrasound users: the right transducer and the right preset, in one touch.



An innovative approach in ergonomics

The appleprobe keeps hand and wrist in their natural alignment distributing the grip throughout the whole hand as one grips an apple. You can relieve tension on the fingers and the wrist, when not scanning, simply by keeping the probe between the fingers. The appleprobe has been designed for both grip:

- innovative palm hold
- conventional pincer hold



Great ergonomics

Esaote has always been recognized as a leader in ergonomics, design and simplicity of use.

Our design concept matches sonographer's wishes: it increases comfort and satisfaction, which in turn supplies an increased diagnostic confidence.



- Superb imaging
- Versatile configuration
- Easy workflow
- Smart portatibility
- Ready to use within seconds
- Long time battery service
- Advanced networking
- Safe storage



Touchscreen technology



2 transducer connectors



Security lock



@Touch



Optional up to 4 transducers connected



90° rotating monitor

@Touch

Customized settings and multiple functions can be organised according to clinical preferences and then easily recalled by just pressing a button.

Wireless connectivity

Being equipped with wireless connectivity, easy networking is just a click away.



Remote service

Your system will be recovered in the shortest time possible. Simply connect it to the network and Esaote's Service Team will easily troubleshoot any issues, perform proactive maintenance and monitor performance.





www.esaote.com



MyLab[™]Gamma

A World without Boundaries with Smart Portable Ultrasound



Esaote S.p.A.
Via di Caciolle, 15 50127 Florence, Italy, Tel. +39 055 4229 1, Fax +39 055 4229 208, international.sales@esaote.com
Via A. Siffredi, 58 16153 Genoa, Italy, Tel. +39 010 6547 1, Fax +39 010 6547 275, info@esaote.com



0051

160000024MAK Ver. 01

Официален представител
на **Esaote SpA** за България
Sonomedica
София • Пловдив • Варна
Национален тел. 0700 16251
Моб. 0896 882958
e-mail: office@sonomedica.bg
www.sonomedica.bg

Technology and features are system/configuration dependent.
MyLab[™]Desk ³ SW only viewer is not intended or provided for an official diagnostic interpretation.
Specifications subject to change without notice. Information might refer to products or modalities not yet approved in all countries.
For further details, please contact your Esaote sales representative.

