

The Veterinarian's **Choice**



Six



Compact & Complete

MyLab™Delta VET **Mobile**

Making the Difference!



Features

- **ROBUST AND SPLASH PROOF!**
- Easy to clean
- 2 transducer connectors on board
- 13.3" LCD wide screen monitor
- Long lasting / fast charging battery
- 15 seconds battery-based start-up time
- Height adjustable robust trolley with 4 large swiveling wheels
- Trolley for mobile use



Patient ID/Owner Name

The patient demographic screen is dedicated to the veterinary environment with fields for the animal's name as well as species and breed.



Application Selection

The veterinary application software makes it easy to choose from a list of applications before starting the examination. After selecting the application, the system automatically displays the presets corresponding to the chosen purpose. A dedicated application icon is shown on the screen, confirming that the correct settings are selected.



Measurements and Reports

Confirming Esaote's dedication to the veterinary world, complete veterinary measurement packages, including abdominal, cardiology, and reproductive gestational calculations provide easy exam documentation.



Body Marks

Using a body mark to show the exact position that the scan was done is useful. But being able to indicate this with a body mark that actually resembles the scanned species is even better. During or after an exam or measurement it is very easy to "mark" the exact area of examination using the dedicated veterinary body marks.



Image Quality

You can rely on excellent image quality to aid fast and accurate diagnosis with both Esaote systems, with any application or probe.

MyLabDeltaVET and MyLabSixVET are based on the same technology platform. Esaote offers the best solution for any situation, in any environment; MyLabDeltaVET as a robust, portable for mobile use, or MyLabSixVET for more stationary use. Both systems can cover all examination needs in your practice; any species and every application, from small to large dogs, cats, and exotic animals to equine and farm animals. From abdominal, reproductive, and musculoskeletal to cardiology imaging.

MyLab™DeltaVET



Modularity

Both systems can be configured to your needs. The base is the B/W version with an OPUS SC3123 micro-convex transducer. Optional standard transducers are available; the systems can even be enhanced, both in terms of quality with extended licence transducers and in terms of functionality (advanced cardiology) with phased array transducers. Doppler and color Doppler are additional options to ensure optimal modularity for every need.



MyLab™Desk³

With MyLab™Desk³ installed on your PC you can easily copy your entire archive from the ultrasound system onto a standard PC to conveniently review and process images.



Wireless Windows® and DICOM Connectivity

Both systems are designed for limitless wireless connectivity and can be easily implemented in any Windows® or DICOM environment. Access to wireless connectivity, easy networking, printing, and communication with external PCs are just one click away.



Remote Troubleshooting and Services

Your system will be recovered in the shortest time possible. Via the Internet, Esaote's Service Team can easily troubleshoot any issues, perform proactive maintenance, and monitor performance.

Office MyLabSix™VET



Features

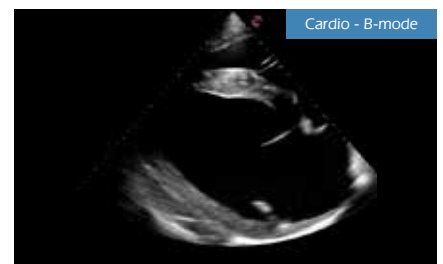
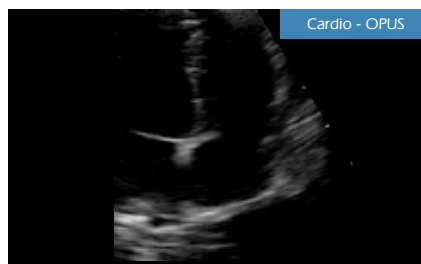
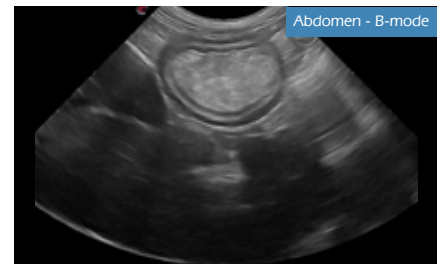
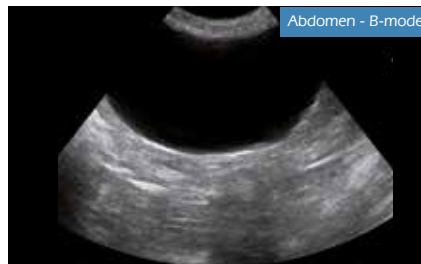
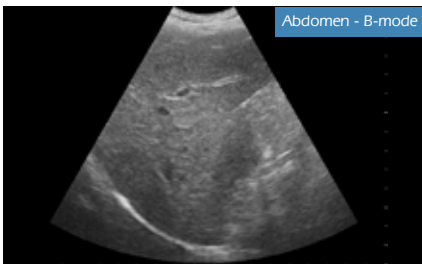
- 3 transducer connectors
- 19" rotatable widescreen monitor
- Transducer cable organiser
- Storage shelf
- Four 360° rotatable wheels
- Height-adjustable rotatable keyboard

Small Animals



Excellent image quality

MyLabDeltaVET and MyLabSixVET both provide impressive image quality in a wide range of applications. Besides B-mode, M-mode and Doppler imaging, the systems offer multiple advanced technologies to meet every clinical need.



For over 30 years, Esaote has been the market leader in meeting the imaging needs of the veterinarians in their daily practice. Fully dedicated functionality, high image quality, and easy operation are the key attributes. Both MyLabSixVET and the portable MyLabDeltaVET are designed to fulfill the small animal veterinarian's expectations.

OPUS

One Probe Ultrasound Solution



SC3123 Micro-Convex Probe

This unique micro-convex transducer is designed for abdominal as well as basic heart ultrasounds. Its wide frequency range means it can be used for cats, dogs of different sizes, and exotic animals. This makes SC3123 the truly a 'One Probe Ultrasound Solution' in daily veterinary practice.

Transducers



SC3123

Abdominal scanning and basic cardiology in dogs, cats, and exotic animals.

- 9-4 MHz
- Up to 93° scan angle



AC2541

Abdominal imaging, large dogs and large-sized exotic animals

- 8-1 MHz
- Up to 63° scan angle



SL3323

MSK in dogs and cats and general imaging of exotic animals

- 13-6 MHz
- 40 mm



SL1543

MSK in dogs and cats and general imaging of exotic animals

- 13-4 MHz
- 47 mm



SL3116

Visualizing very superficial structures in dogs, cats and small exotics

- 10-22 MHz
- 13 mm



P2 3-11

Mid/high-frequency phased array transducer for advanced cardiac examinations in mid- and small-sized species

- 11-3 MHz
- Up to 89° scan angle



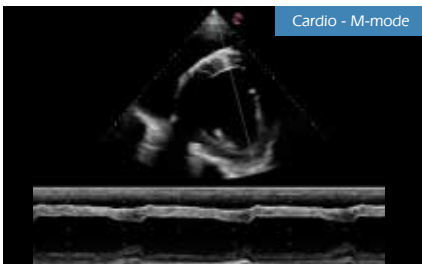
SP2730

Low-frequency phased array transducer for advanced cardiac examination in larger animals

- 5-1 MHz
- Up to 87° scan angle

Biopsy guides are available as an option for all relevant transducers

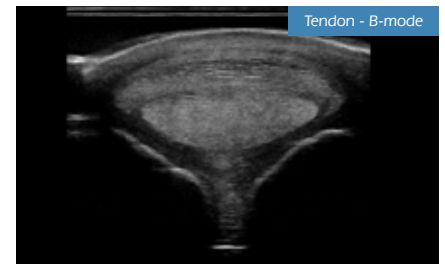
Equine & Farm Animals



Cardio - M-mode



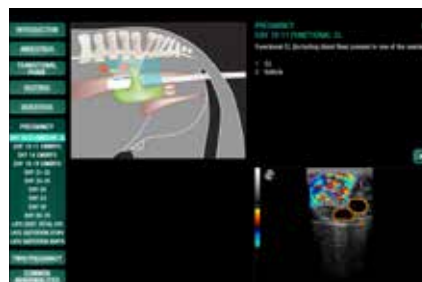
Repro - B-mode



Tendon - B-mode

Libraries

MyLibrary is an innovative application and dedicated tool integrated in both systems for users' reference, which includes anatomical atlases and "How To" reference images, so users can instantly and easily have access to a fast, thorough, and application-specific educational environment.



MyLabDeltaVET and MyLabSixVET cover all possible equine and farm animal applications. Specific transducers are available for reproductive scanning, tendons and ligaments, cardiac and general imaging. The unique libraries supporting equine reproductive and tendon scanning confirm Esaote's commitment and leadership in the field.

Veterinary Endorectal Transducer



Veterinary Endorectal Transducer (SV3513)

The famous Esaote Veterinary Endorectal Transducer has a proven reputation based on its image quality, reliability, ergonomic design, and durability. This transducer is widely used for reproductive and MSK purposes in daily veterinary practice.

Transducers



SV3513

For all frequently occurring cases in daily large animal practice. This probe is excellent for reproductive and basic tendon scanning.

- 10-5 MHz
- 50 mm



L 3-11

Low frequency linear transducer for visibility of deep structures of tendons and ligament in equine

- 3-11 MHz
- 40 mm



SL3323

The ideal tendon transducer

- 13-6 MHz
- 40 mm



SL1543

Tendons and ligaments for the demanding specialist

- 13-4 MHz
- 47 mm



AC2541

Transabdominal reproductive scanning, general imaging, and MSK

- 8-1 MHz
- Up to 63° scan angle



SC3123

Specific transducer for hoof and pastern scanning

- 9-4 MHz
- Up to 93° scan angle



SP2730

Low-frequency phased array transducer for advanced cardiac examination in equine and large animals

- 5-1 MHz
- Up to 87° scan angle

Biopsy guides are available as an option for all relevant transducers



Join the Global Leader in Veterinary Imaging

Esaote is the pioneer in ultrasound and MRI in the veterinary field. Esaote has over 30 years of market leadership and is a preferred supplier for veterinary practices, clinics, and research centers, and also for many zoos and wildlife institutions.

Offering the perfect products in terms of quality, functionality, price, service, and education, combined with a deep understanding of veterinarians' needs, guarantees our top position in the veterinary imaging market.

Please challenge us with your imaging, ultrasound, and/or MRI needs in your daily practice or specific projects. We would love to be your imaging partner.

www.esaote.com/veterinary

160000085MAK Ver. 07



Esaote S.p.A.
Via E. Melen, 77 16152 Genoa, Italy, Tel. +39 010 6547 1, Fax +39 010 6547 275, esaote@pec.esaote.com
Esaote Europe B.V.
Philipsweg, 1 6227 AJ Maastricht, The Netherlands, Tel +31 433 82 46 00, Fax +31 433 82 46 01, info@esaote.nl



Windows® is a registered trademark of Microsoft Corporation. Technology and features are system/configuration dependent.
MyLab™ Desk SW only viewer is not intended or provided for an official diagnostic interpretation.
Specifications subject to change without notice. Information might refer to products or modalities not yet approved in all countries.
For further details, please contact your Esaote sales representative.